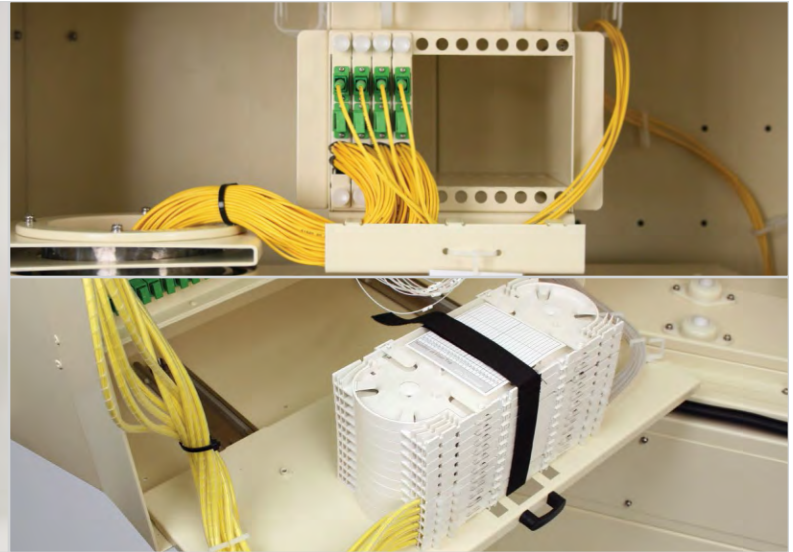


# Fiber-to-the-Premises (FTTP) Closures and Accessories

## PRODUCT LINE CARD



FDH	Part Number	Capacities			Pad-Mount Dimensions <sup>2</sup>		
		SC/APC Adapter <sup>1</sup>	Splitter Module	Parking Lot	Height in (mm)	Width in (mm)	Depth in (mm)
	FDH-AA000	72 <sup>1</sup>	12	72	43.7 (1,110)	26.4 (671)	15.8 (401)
	FDH-BA000	144 <sup>1</sup>	12	72	43.7 (1,110)	26.4 (671)	15.8 (401)
	FDH-CA000	216 <sup>1</sup>	12	72	43.7 (1,110)	26.4 (671)	15.8 (401)
	FDH-DA000	288 <sup>1</sup>	12	72	43.7 (1,110)	26.4 (671)	15.8 (401)

<sup>1</sup>Pre-connectorized cable or in-hub splicing capable; splice trays not included.  
<sup>2</sup>Vault-mount changes the height dimension to 49.2 inches (1,250 mm).

SPLITTERS	Part Number <sup>1</sup>	Splitter Ratio	Insertion Loss	Uniformity	Return Loss	Directivity	PDL	Operating Temp.
			Max. <sup>2</sup> dB	dB	dB	dB	dB	°C
	FDH-SMD14	1 x 4	≤ 7.6	≤ 0.6	≥ 55	≥ 55	≤ 0.2	-40 - 85
	FDH-SMD18	1 x 8	≤ 11.0	≤ 0.8	≥ 55	≥ 55	≤ 0.3	-40 - 85
	FDH-SM116	1 x 16	≤ 13.7	≤ 1.0	≥ 55	≥ 55	≤ 0.3	-40 - 85
	FDH-SM132	1 x 32	≤ 16.9	≤ 1.3	≥ 55	≥ 55	≤ 0.3	-40 - 85

<sup>1</sup>All splitter modules comply with ITU-T G.652 and G.657.A recommendations. Band Pass is 1260 to 1650 nm. <sup>2</sup>Does not include connector loss

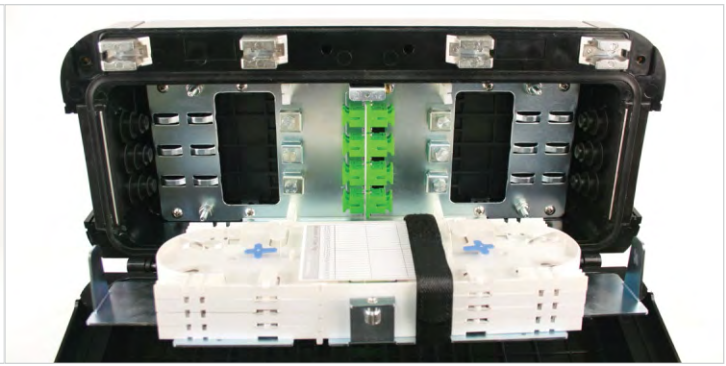


FDC	Part Number	Number of Round Ports <sup>1</sup>	Round Port Cable O.D. Range in (mm)	Number of Express Ports	Express Port Cable O.D. Range in (mm)	Maximum Round or Flat Drops	Round/Flat Drop O.D. in (mm)	Port Sealing Method	Number of Thru-Bolt Grounds
	FD2-BD10F	4	0.28-0.63 (7-16)	1 Dual cable	0.39-0.79 (10-20)	12	0.36/0.18 x 0.31 (9/4.5 x 8)	Compression seal	6
	FD2-CD10F	4	0.28-1.00 (7-25)	1 Dual cable	0.67-1.10 (17-28)	16	0.36/0.18 x 0.31 (9/4.5 x 8)	Compression seal	6
	FD2-DD10F	4	0.28-1.00 (7-25)	1 Dual cable	0.67-1.28 (17-32)	16	0.36/0.18 x 0.31 (9/4.5 x 8)	Compression seal	6

<sup>1</sup>Round ports can be used for a single feeder cable or multiple round or flat drops.

FDC	Part Number	Height in (mm)	Diameter in (mm)	Weight lbs (kg)	Splice Tray Capacity		Fiber Splice Capacity <sup>2</sup>		Fiber Slack Storage	
					Loose Tube	Ribbon	Loose Tube <sup>2</sup>	Ribbon <sup>2</sup> (144 per tray)	Loose Tubes (8 ft per tube)	Ribbons (8 ft per ribbon)
	FD2-BD10F	18.3 (466)	7.8 (199)	7.7 (3.5)	6	2	144	216	12	18
	FD2-CD10F	20.9 (532)	9.7 (246)	13.2 (6.0)	8	6	288	864	24	72
	FD2-DD10F	26.9 (682)	9.7 (246)	17.6 (8.0)	8	8	576	1,152	48	96

<sup>2</sup>Refer to the "Port and Grounding Specifications" table above to verify compatibility of the Cable O.D. with the Fiber Splice Capacity prior to closure selection.



FIC	Part Number	Height in (mm)	Width in (mm)	Depth in (mm)	Weight lb (kg)	Sealing/Locking Method	Splice Tray Capacity		Maximum Fiber Splice Capacity		Buffer Tube Storage		SC/APC Adapter Capacity
							LBT	Ribbon	LBT (24/tray)	Ribbon (144/tray)	LBT (8 ft/tube)	Ribbons (8 ft/ribbon)	
	FIC-AD100	6.69 (170)	16.93 (430)	4.33 (110)	6.61 (3.0)	Multi-Bolt/Two-piece	4	2	96	288	8	24	-
	FIC-BD100	7.48 (190)	16.93 (430)	3.94 (100)	7.50 (3.4)	Single-Bolt/Latch	4	2	96	288	8	24	-
	FIC-BD10A	7.48 (190)	16.93 (430)	3.94 (100)	7.50 (3.4)	Single-Bolt/Latch	4	2	96	288	8	24	8
	FIC-CD100	7.48 (190)	16.93 (430)	5.32 (135)	9.26 (4.2)	Single-Bolt/Latch	8	3	192	432	16	36	-
	FIC-CD10A	7.48 (190)	16.93 (430)	5.32 (135)	9.26 (4.2)	Single-Bolt/Latch	6	3	144	432	16	36	12



SSM	Part Number	Height in (mm)	Width in (mm)	Depth in (mm)	Weight lb (kg)	Cable Entry Ports	
						In	Out
						SSM-2C000	6.7 (170)

CABLE	Part Number	Description	Nominal Dimensions in (mm)	Weight
				lbs/kft (kg/km)
				W7001KU01
W7001K101	Toneable I/O FTTP	0.40 (10.2) x 0.18 (4.5)	31 (47)	

FTTP ACCESSORIES		Part Number	Description	Closure Compatibility	Kit Components	
		FDC Compatible	FDC-TE144	Splice Tray Kit - 144 Ribbon	All	Splice tray, 12 ribbon splice sleeves, 4 transport tubes, 8 cable ties
			FDC-TD240	Splice Tray Kit - 24 LBT	All	Splice tray, 24 splice sleeves, 4 transport tubes, 8 cable ties
FDC-TD360	Splice Tray Kit - 36 LBT		Type C	Splice tray, 36 splice sleeves, 6 transport tubes, 16 cable ties		
FDC-TD720	Splice Tray Kit - 72 LBT		Type D	Splice tray, 72 splice sleeves, 12 transport tubes, 24 cable ties		
FD2-APLMT	Pole Mount Kit		Type A	Mounting bracket, 2 lag screws, 2 lock washers		
FD2-BPLMT	Pole Mount Kit		Type B	Mounting bracket, 2 lag screws, 2 lock washers		
FD2-CPLMT	Pole Mount Kit		Type C, Type D	Mounting bracket, 3 lag screws, 3 lock washers		
FD2-GDR07	End Grommet Kit - 3 round drop ports (7 mm)		Type A, Type B	25 grommets		
FD2-GDR09	End Grommet Kit - 2 round drop ports (9 mm)		Type A, Type B	25 grommets		
FD2-GDF08	End Grommet Kit - 3 flat drop ports (4.5 mm x 8 mm)		Type A, Type B	25 grommets		
FD2-GFR12	End Grommet Kit - 1 round port (9 mm to 12 mm)		Type A, Type B	25 grommets		
FD2-GFR16	End Grommet Kit - 1 round port (13 mm to 16 mm)		Type A, Type B	25 grommets		
FD2-CFR20	End Grommet Kit - 1 round port (20 mm)		Type C, Type D	25 grommets		
FD2-CFR25	End Grommet Kit - 1 round port (25 mm)		Type C, Type D	25 grommets		
FD2-CDR07	End Grommet Kit - 4 round ports (7-9 mm)		Type C, Type D	25 grommets		
FD2-CDF08	End Grommet Kit - 4 flat drop ports (4.5 x 8 mm)	Type C, Type D	25 grommets			
FD2-CTOOL	Compression Connector Wrench	All	1 wrench			
FIC Compatible	FIC-TD120	Splice Tray Kit - 12 LBT or 144 Ribbon	All	Splice tray, 12 splice sleeves, 4 transport tubes, 8 cable ties		
	FIC-TD240	Splice Tray Kit - 24 LBT	All	Splice tray, 24 splice sleeves, 4 transport tubes, 8 cable ties		
	FIC-G3P25	End Grommet Kit - 3 ports	All	25 end-grommets, 25 retaining rings, 25 support bars		
	FIC-G4P25	End Grommet Kit - 4 ports	All	25 end-grommets, 25 retaining rings, 25 support bars		
	FIC-GCP25	End Grommet Kit - 2-ports, 16 drop ports	All	25 end-grommets, 25 retaining rings, 25 support bars		
FDH Compatible	FIC-HA000	Aerial Hanger Kit	All	2 hanger arms, 2 mounting screws		
	FIC-TD120	Splice Tray Kit - 12 LBT or 144 Ribbon	-	Splice tray, 12 splice sleeves, 4 transport tubes, 8 cable ties		
	FIC-TD240	Splice Tray Kit - 24 LBT	-	Splice tray, 24 splice sleeves, 4 transport tubes, 8 cable ties		
	FDH-SCA72	72-SC Adapter Panel (SC/APC)	-	3 panels of 24 SC/APC adapters with mounting screws		
	FDP-xy1A0 <sup>1</sup>	Pre-connectorized feeder or distribution cable	-	100 ft cable assembly with labeled SC/APC connectors		

KEY	Feeder / Distribution Cable Size							
	Feeder Cable Size (number of fibers)				Distribution Cable Size (number of fibers)			
		12	24	48	72	144	216	288
<sup>1</sup> Replace "x" with:	A	B	C	D	E	F	G	

KEY	Cable Type (Feeder and Distribution)			
	Single Armor Loose Tube	Dielectric Loose Tube	Armored Ribbon	Dielectric Ribbon
	<sup>1</sup> Replace "y" with:	A	B	C