

W7 Fiber Drop Cable Solutions

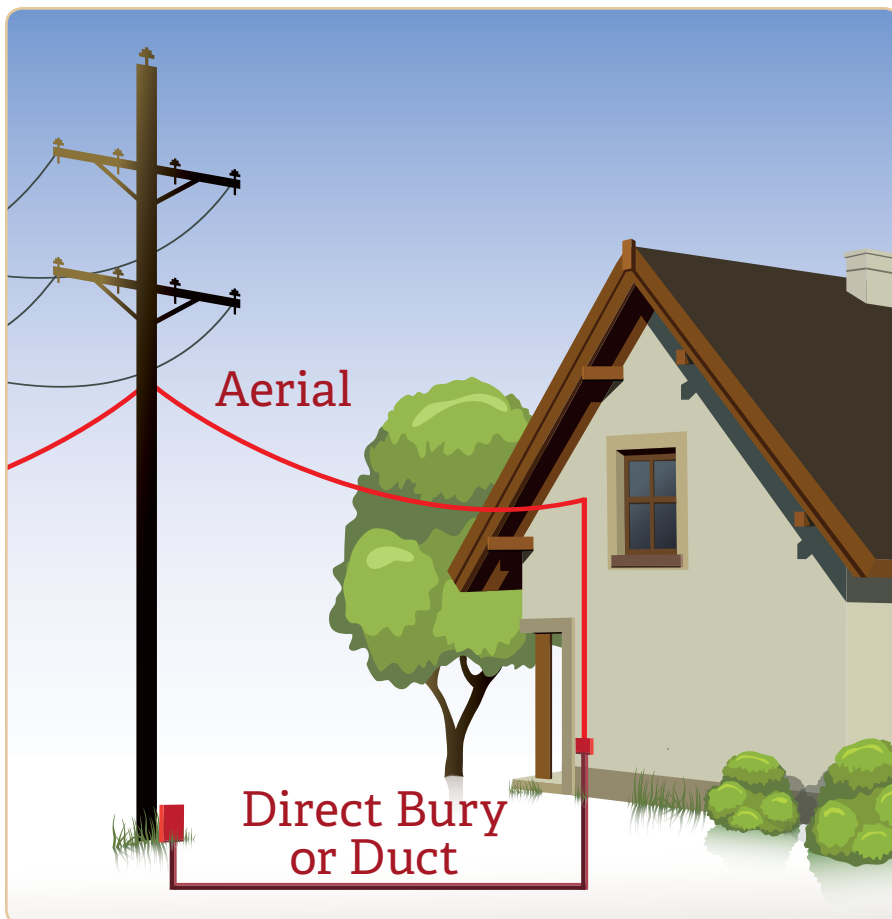
Installation Made Easy

W7 Fiber Drop is a rugged cable design which provides easy installation for outdoor ONTs as well as a through-the-wall solution for indoor ONTs.

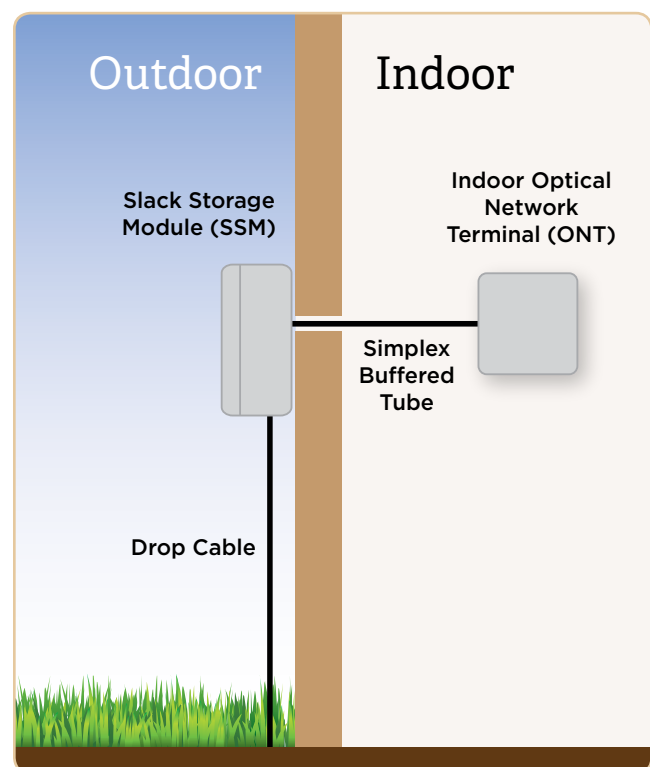
- ▶ Versatile cable design can be terminated on the external premises wall or pass directly into the premises without need for a transitional splice or connector.
- ▶ Universal deployment: duct, direct bury or aerial.
- ▶ Water blocked and weather resistant.
- ▶ In stock and ready to ship when and where you need it!

Versatile Design for Your Evolving FTTH Deployment.

- ▶ W7 Fiber Drop meets GR-20 for OSP while premises tight buffer cable meets GR-409 for OFNR cable in the premises.
- ▶ 1 or 2 fibers available for business, home, or MDU applications.



Two Options at the Premises



PART NUMBERS AND PHYSICAL CHARACTERISTICS

UNIVERSAL FIBER DROP

| Part Number ¹ | Fiber Count | Nominal Dimensions | | | | Cable Tensile Load | | Cable Bend Radius | | Fiber Component Bend Radius | |
|--------------------------|-------------|--------------------|---------------|-------------------------|--------------------------------|--------------------|-------------------|-------------------|-------------------|-----------------------------|-------------------|
| | | Minor in (mm) | Major in (mm) | Fiber Component in (mm) | Nominal Weight lbs/kft (kg/km) | Install lbs (N) | Long Term lbs (N) | Install in (mm) | Long Term in (mm) | Install in (mm) | Long Term in (mm) |
| W7001xU0y | 1 | 0.17 (4.5) | 0.32 (8.2) | 0.11 (2.9) | 29 (44) | 300 (1,350) | 90 (405) | 3.6 (91) | 1.8 (46) | 2.2 (56) | 1.1 (28) |
| W7002xU0y | 2 | 0.17 (4.5) | 0.32 (8.2) | 0.11 (2.9) | 29 (44) | 300 (1,350) | 90 (405) | 3.6 (91) | 1.8 (46) | 2.2 (56) | 1.1 (28) |

TONEABLE FIBER DROP

| Part Number ¹ | Fiber Count | Nominal Dimensions | | | | Cable Tensile Load | | Cable Bend Radius | | Fiber Component Bend Radius | |
|--------------------------|-------------|--------------------|---------------|-------------------------|--------------------------------|--------------------|-------------------|-------------------|-------------------|-----------------------------|-------------------|
| | | Minor in (mm) | Major in (mm) | Fiber Component in (mm) | Nominal Weight lbs/kft (kg/km) | Install lbs (N) | Long Term lbs (N) | Install in (mm) | Long Term in (mm) | Install in (mm) | Long Term in (mm) |
| W7001x10y | 1 | 0.17 (4.5) | 0.40 (10.2) | 0.11 (2.9) | 31 (47) | 300 (1,350) | 90 (405) | 3.6 (91) | 1.8 (46) | 2.2 (56) | 1.1 (28) |
| W7002x10y | 2 | 0.17 (4.5) | 0.40 (10.2) | 0.11 (2.9) | 31 (47) | 300 (1,350) | 90 (405) | 3.6 (91) | 1.8 (46) | 2.2 (56) | 1.1 (28) |

FIBER DROP ASSEMBLIES

| Part Number ¹ | Fiber Count | Cable Component | Connector Type | Length in (ft) | Cable Tensile Load | | Cable Bend Radius | | Fiber Component Bend Radius | |
|--------------------------|-------------|-----------------|----------------|----------------|--------------------|-------------------|-------------------|-------------------|-----------------------------|-------------------|
| | | | | | Install lbs (N) | Long Term lbs (N) | Install in (mm) | Long Term in (mm) | Install in (mm) | Long Term in (mm) |
| FF1C-001U13-EC11 | 1 | W7001K101 | SCAPC | 100 | 300 (1,350) | 90 (405) | 3.6 (91) | 1.8 (46) | 2.2 (56) | 1.1 (28) |
| FF1C-001U13-EC11 | 1 | W7001K101 | SCAPC | 100 | 300 (1,350) | 90 (405) | 3.6 (91) | 1.8 (46) | 2.2 (56) | 1.1 (28) |
| FF1C-001U13-EC51 | 1 | W7001K101 | SCAPC | 200 | 300 (1,350) | 90 (405) | 3.6 (91) | 1.8 (46) | 2.2 (56) | 1.1 (28) |
| FF1C-001U13-EBN1 | 1 | W7001K101 | SCAPC | 300 | 300 (1,350) | 90 (405) | 3.6 (91) | 1.8 (46) | 2.2 (56) | 1.1 (28) |
| FF1C-001U13-EC91 | 1 | W7001K101 | SCAPC | 400 | 300 (1,350) | 90 (405) | 3.6 (91) | 1.8 (46) | 2.2 (56) | 1.1 (28) |
| FF1C-001U13-ECD1 | 1 | W7001K101 | SCAPC | 500 | 300 (1,350) | 90 (405) | 3.6 (91) | 1.8 (46) | 2.2 (56) | 1.1 (28) |
| FF1C-001U13-ECH1 | 1 | W7001K101 | SCAPC | 750 | 300 (1,350) | 90 (405) | 3.6 (91) | 1.8 (46) | 2.2 (56) | 1.1 (28) |
| FF1C-001U13-EA71 | 1 | W7001K101 | SCAPC | 1000 | 300 (1,350) | 90 (405) | 3.6 (91) | 1.8 (46) | 2.2 (56) | 1.1 (28) |

WATER BLOCK AND JACKET PRINT CODES

| | Dry core | | Dry core special | |
|--------------------------------|----------|--------|------------------|--------|
| | Feet | Meters | Feet | Meters |
| ¹ Replace "y" with: | 1 | 2 | 5 | 6 |

FIBER TYPES

| ¹ Replace "x" with: |
|--------------------------------|

SINGLE MODE

| TeraFlex® Bend Resistant | | |
|--------------------------|----------|----------|
| G.657.A1 | G.657.A2 | G.657.B3 |
| K | J | L |

SPECIFICATIONS

| | |
|--------------------------------------|---|
| Maximum Span Length at 1% Sag ft (m) | Light Loading: 350 (101) Medium Loading: 275 (84) Heavy Loading: 150 (46) |
| Standards Compliance | Telcordia® GR-20-CORE RoHS-compliant |

Telcordia is a registered trademark of Ericsson Inc.

CONNECTOR SPECIFICATIONS

| | |
|-----------------|----------------------------------|
| Type | SC |
| Ferrule | Ceramic |
| Polish Type | APC |
| Insertion Loss | Typical: 0.15 dB Max: 0.30 dB |
| Min Return Loss | 0.55 dB |

MACRO BENDING PERFORMANCE

| | | |
|----------------------------------|--------------|--------------|
| 10 Turns on 15 mm Radius Mandrel | ITU G 657 A | TeraFlex SMF |
| Macro bending loss @ 1550 nm | 0.25 dB Max. | ≤ 0.20 dB |
| Macro bending loss @ 1625 nm | 1.00 dB Max. | ≤ 0.50 dB |
| 1 Turn on 10 mm Radius Mandrel | ITU G 657 A | TeraFlex SMF |
| Macro bending loss @ 1550 nm | 0.75 dB Max. | ≤ 0.20 dB |
| Macro bending loss @ 1625 nm | 1.50 dB Max. | ≤ 0.20 dB |

ENVIRONMENTAL SPECIFICATIONS

| | |
|-------------------|----------------|
| Operation/Storage | -40°C to +70°C |
| Installation | -10°C to +70°C |

PACKAGING AND ASSEMBLIES



1,000 Foot Reel-in-a-Box
The cable is placed onto a plastic spool, which is placed into a box. The spool may be taken from the box for installation or may be left in the box where the cable pays out through a slotted opening.



W7 Fiber Drop Assemblies incorporate a rugged drop cable design, providing a through-the-wall solution for indoor ONTs with the labor savings of a connectorized assembly. The connector is attached at the end of a 6" breakout, which is protected from water egress at the breakout by a heatshrink tube. See *Fiber Drop Assemblies Table for length options.*



Wood/Plywood Reel
W7 Series is available in bulk, shipped on a plywood reel to your specified length.

INSTALLATION TOOLS

Fiber Drop P-clamps

The W7 Series Fiber Drop is specifically designed to perform perfectly with industry standard P-Clamps. We recommend the SI-0972SBL flat fiber optic drop wire clamp.

Order now from www.macleanseniories.com



The W7 Series Fiber Drop is designed for easy access using the FOD-2000 cable slitting tool.



Order now from www.jonard.com

WHERE TO BUY

CONTACT INSIDE SALES: 1.800.551.8948 | Comm.INSideSales@SPSX.com

PRODUCT RESOURCES

Visit ce.SuperiorEssex.com for product information and technical guides